

Supplementary Data

Cortical Changes in Incipient Alzheimer's Disease

Annapaola Prestia^a, Valeria Drago^a, Paul E. Rasser^{b,c}, Matteo Bonetti^d, Paul M. Thompson^e and Giovanni B. Frisoni^{a,*}

^aLaboratory of Epidemiology Neuroimaging and Telemedicine, IRCCS Centro San Giovanni di Dio FBF, The National Centre for Research and Care of Alzheimer's and Mental Diseases, Brescia, Italy

^bSchizophrenia Research Institute, Sydney, Australia

^cPriority Centre for Brain & Mental Health Research, University of Newcastle, Newcastle, Australia

^dService of Neuroradiology, Istituto Clinico Città di Brescia, Brescia, Italy

^eLaboratory of Neuro Imaging, UCLA School of Medicine, Los Angeles, CA, USA

Accepted 1 September 2010

Supplementary Table 1

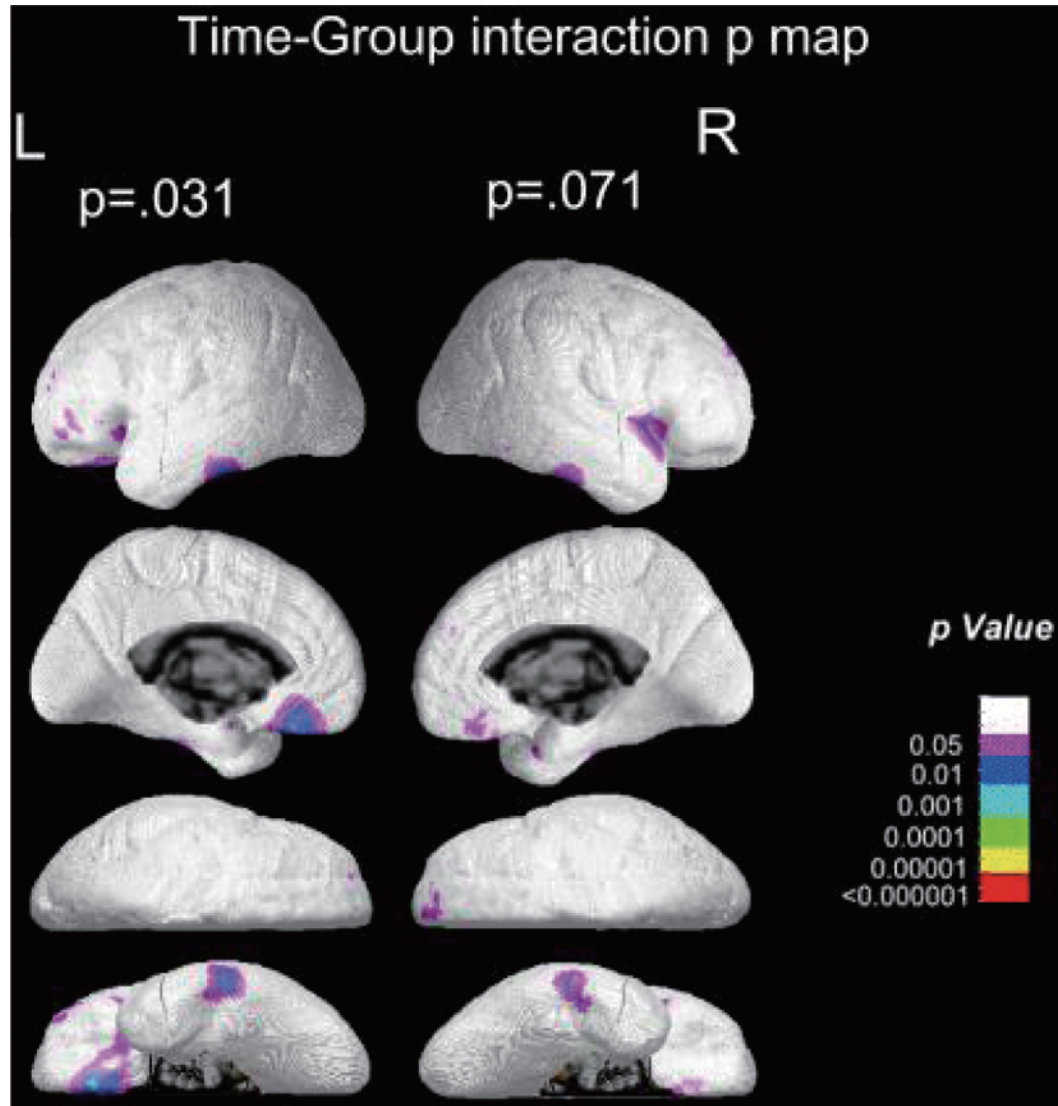
The baseline sociodemographic, cognitive and genetic features of 1 cMCI and 7 sMCI patients whose ages at onset were below 65 years of age

	cMCI (<i>n</i> = 1)	sMCI (<i>n</i> = 7)	All MCI (<i>n</i> = 8)
Age, years	61.5	62.6 ± 2.0	62.3 ± 2.1
Gender, female (%)	1 (100%)	6 (86%)	7 (87%)
Education, years	8.0	7.0 ± 3.0	7.1 ± 2.8
Mini Mental State	26.0	28.4 ± 1.1	28.1 ± 1.3
Exam [range]	[-]	[27–30]	[26–30]
ApoE ε4 carriers, <i>n</i> (%)	1 (100%)	3/7 (43%)	4/8 (50%)
of whom homozygous	0/1 (0%)	1/7 (14%)	1/8 (12%)
Wahlund global score	na	3.8 ± 2.7	3.8 ± 2.7

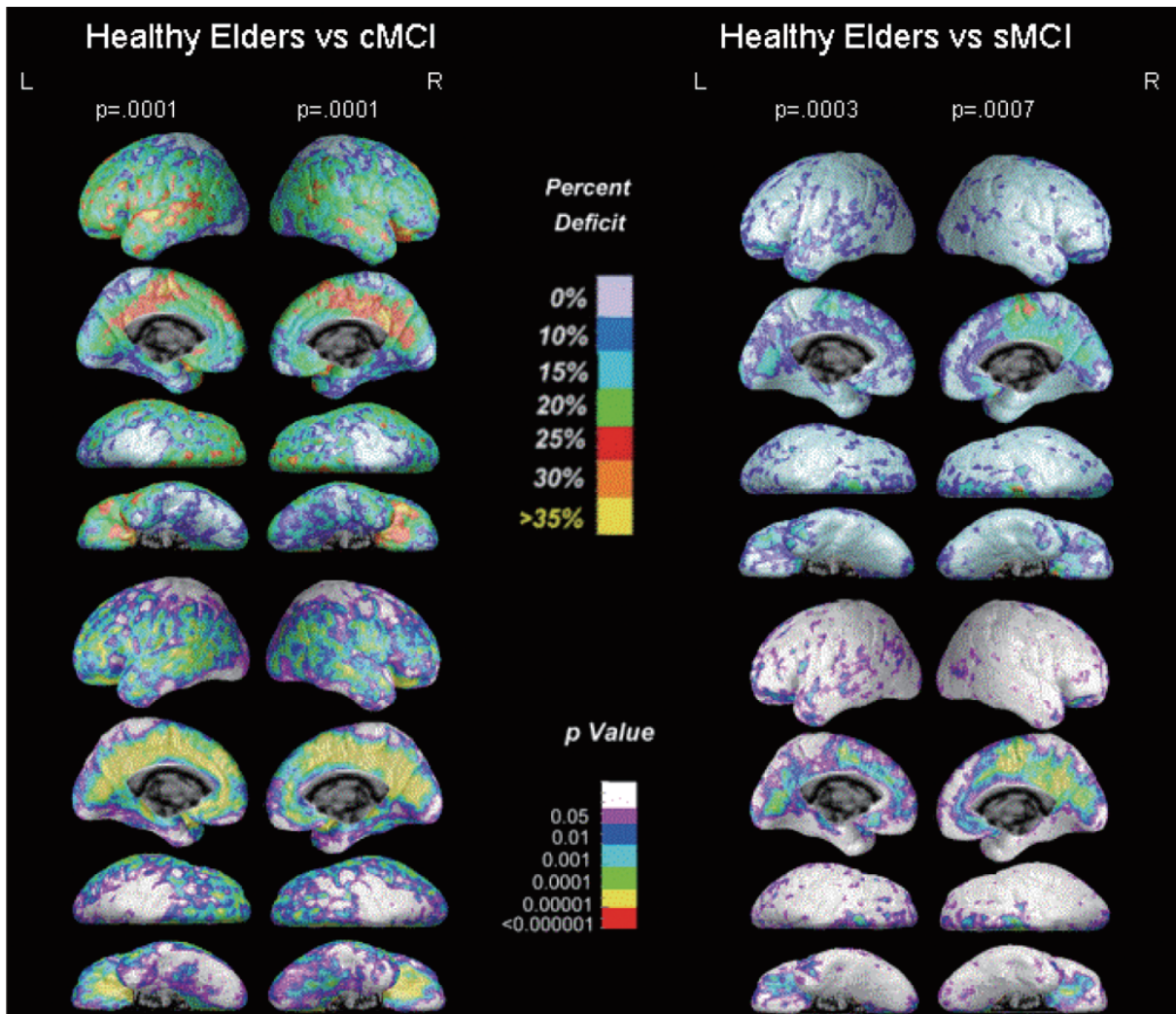
Values indicate mean ± SD.

na = not administered.

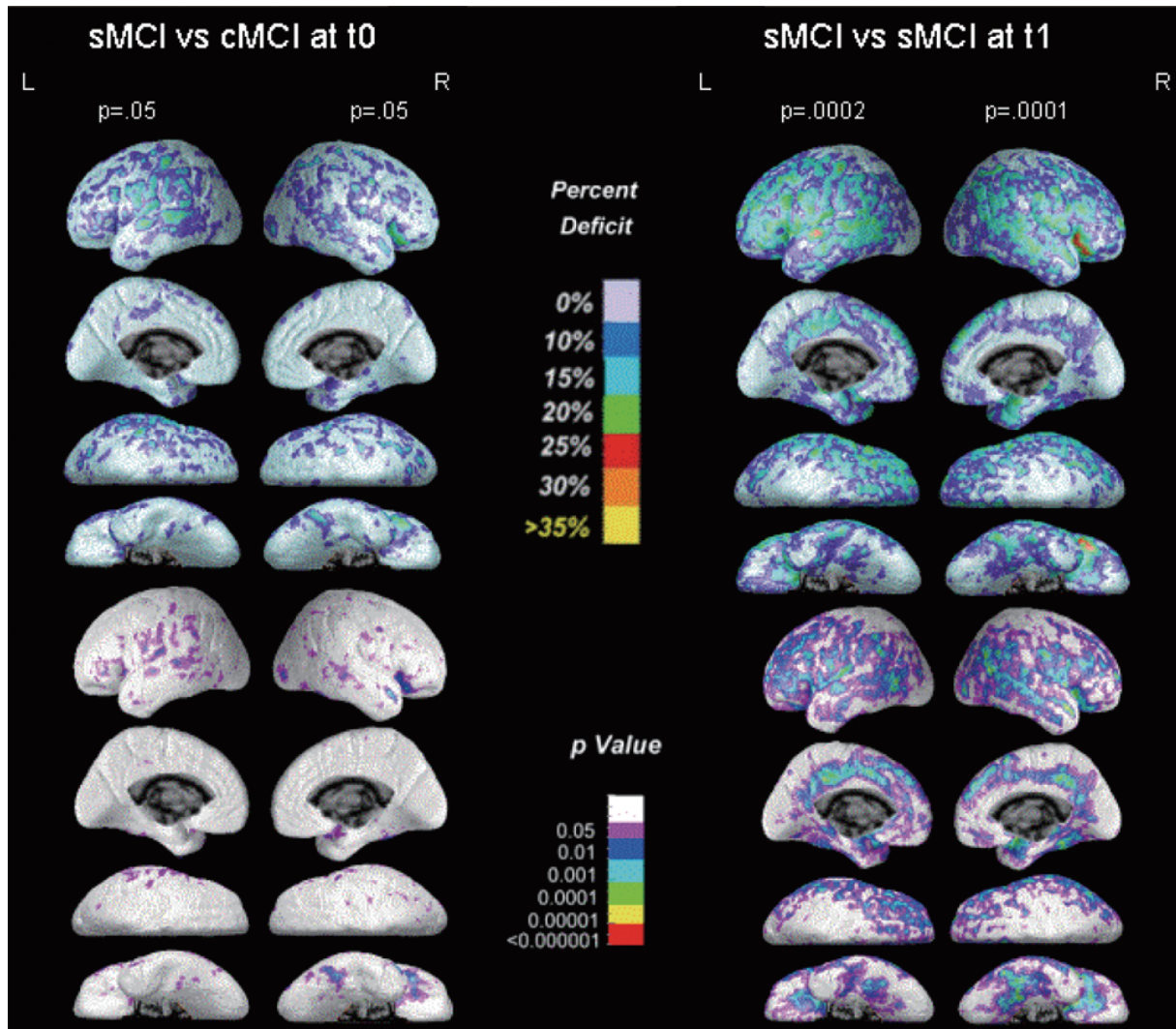
*Correspondence to: Giovanni B Frisoni, Centro San Giovanni di Dio FBF, The National Centre for Research and Care of Alzheimer's and Mental Diseases, via Pilastroni 4, 25125 Brescia, Italy. Tel.: +39 030 3501361; E-mail: gfrisoni@fatebenefratelli.it.



Supplementary Figure 1. Complementary analysis of the time (t0 and t1) – group (cMCI and sMCI) point by point interaction, as shown in Table 3. The results are basically unchanged (see Table 3 by comparison).



Supplementary Figure 2. Supplementary analysis of the difference of gray matter at baseline of converted and stable MCI patients compared with healthy elderly persons shown in Fig. 2. Here, 1 cMCI and 7 sMCI patients whose ages at onset were below 65 years of age were excluded from the analysis. The results are basically unchanged (see Fig. 2 by comparison).



Supplementary Figure 3. Supplementary analysis of the difference of gray matter at baseline and at t1 condition of converted compared with stable MCI patients.