

## Supplementary Data

---

# Shape Abnormalities of the Striatum in Alzheimer's Disease

Laura W. de Jong<sup>a,\*</sup>, Luca Ferrarini<sup>b</sup>, Jeroen van der Grond<sup>a</sup>, Julien R. Milles<sup>b</sup>,  
Johan H.C. Reiber<sup>b</sup>, Rudi G.J. Westendorp<sup>c</sup>, Edward L.E.M. Bollen<sup>d</sup>,  
Huub A.M. Middelkoop<sup>e</sup> and Mark A. van Buchem<sup>a</sup>

<sup>a</sup>*Department of Radiology, Leiden University Medical Center, Leiden, The Netherlands*

<sup>b</sup>*Division of Image Processing of the Department of Radiology, Leiden University Medical Center, Leiden, The Netherlands*

<sup>c</sup>*Department of Geriatrics, Leiden University Medical Center, Leiden, The Netherlands*

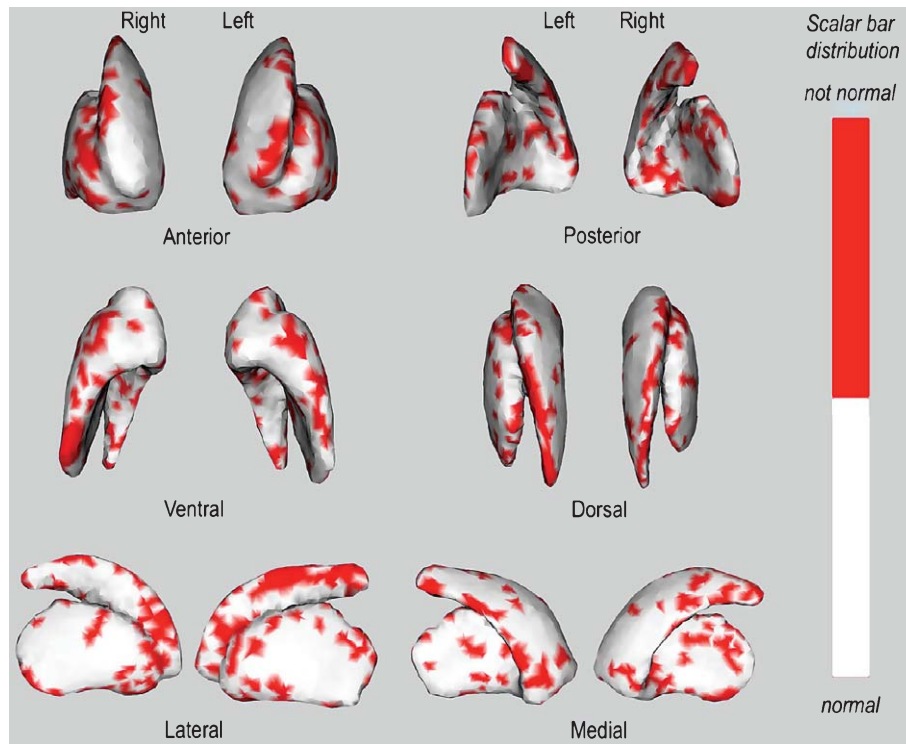
<sup>d</sup>*Department of Neurology, Leiden University Medical Center, Leiden, The Netherlands*

<sup>e</sup>*Division of Neuropsychology of the Department of Neurology, Leiden University Medical Center, Leiden, The Netherlands*

Accepted 3 September 2010

---

\*Correspondence to: L.W. de Jong, MD, Department of Radiology, Leiden University Medical Center, PO Box 9600, 2300 RC Leiden, The Netherlands. Tel.: +31 715262052; Fax: +31 75248256; E-mail: L.W.de.Jong@lumc.nl.



Supplementary Figure 1. Normality of the point distributions surrounding the striatal surface nodes. The distributions of the point clouds surrounding each node on the surface of the striatum that are not normally distributed are colored red. Normality was tested with the Lilliefors test. 25% of the point clouds of the left striatum were not normally distributed and 24% of the right striatum ( $p < 0.05$ ). Applying false discovery rate corrections proved all  $p$ -values to be not significant.