

## Supplementary Data

---

# Early Clinical PET Imaging Results with the Novel PHF-Tau Radioligand [F-18]-T807

David T. Chien<sup>a</sup>, Shadfar Bahri<sup>b</sup>, A. Katrin Szardenings<sup>a</sup>, Joseph C. Walsh<sup>a</sup>, Fanrong Mu<sup>a</sup>,  
Min-Ying Su<sup>b</sup>, William R. Shankle<sup>c</sup>, Arkadij Elizarov<sup>a</sup> and Hartmuth C. Kolb<sup>a,\*</sup>

<sup>a</sup>*Siemens Molecular Imaging, Inc., Culver City, CA, USA*

<sup>b</sup>*Tu and Yuen Center for Functional Onco-Imaging, Department of Radiological Sciences, University of California Irvine, CA, USA*

<sup>c</sup>*Shankle Clinic Memory and Cognitive Disorders Program, Hoag Neurosciences Institute, Newport Beach, CA, USA*

Accepted 12 November 2012

Supplementary Table 1  
Inclusion and exclusion criteria for the trial

---

### Inclusion criteria

Participant has reached his or her 55th birthday at the time of informed consent  
Participant provides written informed consent  
Participant is capable of complying with study procedures  
Participant is capable of communicating with study personnel  
Participant understands and speaks English  
Participant has at least an 8th Grade education  
Participant has no significant hepatic or renal disease as defined by previous medical history and lab results

### HC group

Participant has a low probability of being currently positive for AD as determined by a Mini Mental State Examination (MMSE  $\geq 28$ )

### AD group

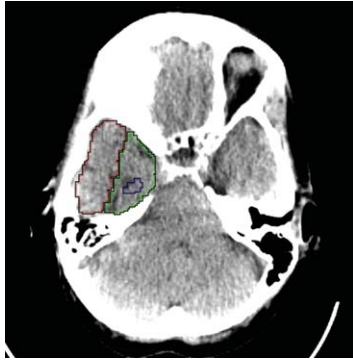
Participant has a high probability of being currently positive for AD that is determined by a Mini Mental State Examination (MMSE  $< 24$ )

### Exclusion Criteria

Female participant is pregnant or nursing  
Participant has prior history of stroke or other condition of the head or neck that, in the Investigators opinion, might affect circulation to the head or image interpretation  
Participant has other neurodegenerative disease that is associated with cognitive impairment or dementia  
Participant has a medical condition that might be associated with elevated amyloid levels, such as amyloid angiopathy, familial amyloidosis, chronic kidney dialysis, Down's syndrome  
Participant has a history of significant cerebrovascular disease  
Participant has previously received [F-18]T807 at any time  
Participant has been involved in an investigative, radioactive research procedure within the past 14 days  
Participant has any other condition or personal circumstance that, in the judgment of the Investigator, might interfere with the collection of complete data or data quality  
Participant has a history in the last five years of significant prescription or non-prescription drug or alcohol abuse, including but not limited to marijuana, cocaine, heroin or derivatives

---

\*Correspondence to: Hartmuth C. Kolb, Siemens Molecular Imaging, Inc., 6100 Bristol Parkway, Culver City, CA 90230, USA. Tel.: +1 310 804 7324; Fax: +1 310 744 4879; E-mail: hckolb@me.com.



Supplementary Figure 1. Example volume of interests (VOIs) of the left mesial temporal, left lateral temporal, and approximate area of the left hippocampus on an axial computed tomography (CT) slice.