

## Supplementary Data

---

# The Effects of Long-Term Omega-3 Fatty Acid Supplementation on Cognition and Alzheimer's Pathology in Animal Models of Alzheimer's Disease: A Systematic Review and Meta-Analysis

Carlijn R. Hooijmans<sup>a,\*</sup>, Pietermel C.M. Pasker-de Jong<sup>b</sup>, Rob B.M. de Vries<sup>a</sup> and Merel Ritskes-Hoitinga<sup>a</sup>

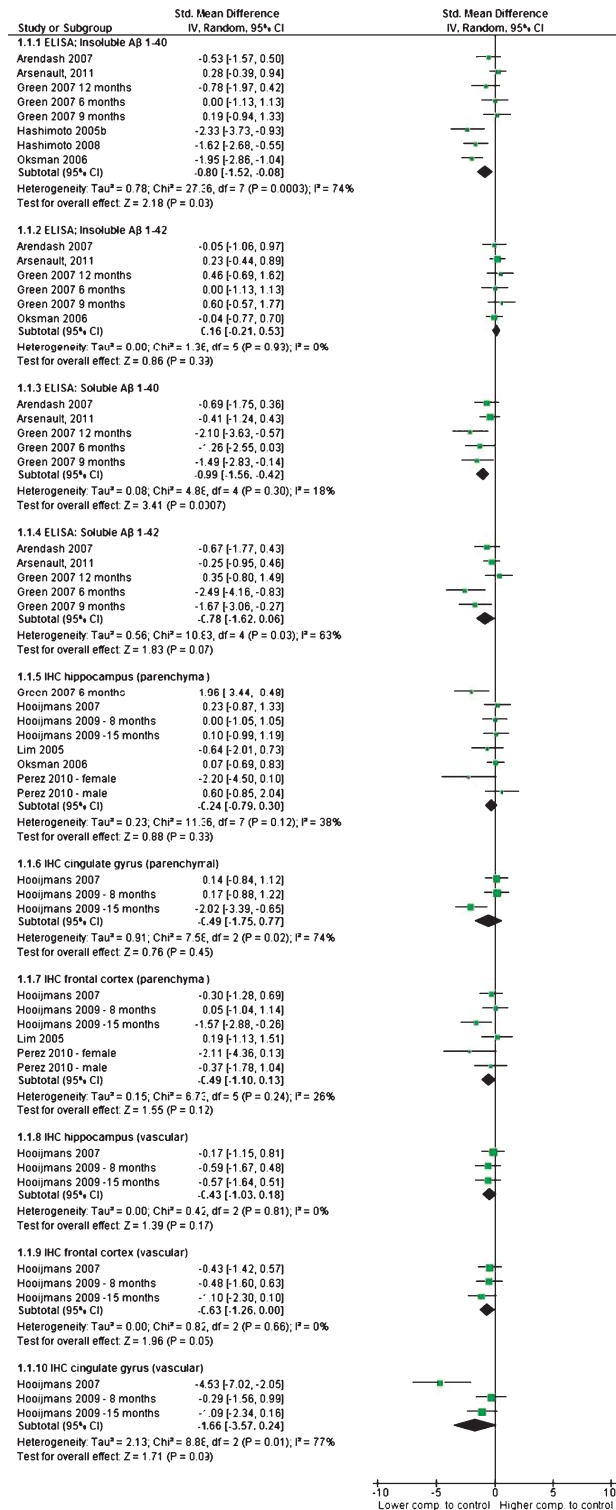
<sup>a</sup>*Radboud University Nijmegen Medical Centre, Central Animal Laboratory and 3R Research Centre, Nijmegen, The Netherlands*

<sup>b</sup>*Radboud University Nijmegen Medical Centre, Department of Epidemiology, Biostatistics and HTA, Nijmegen, The Netherlands*

Accepted 26 August 2011

---

\*Correspondence to: Carlijn R. Hooijmans, Radboud University Nijmegen Medical Centre, Central Animal Laboratory and 3R Research Centre, Geert Grooteplein Noord 29, Route 231, 6525 EZ Nijmegen, The Netherlands. Tel.: +0031 243668364; Fax: +0031 243616375; E-mail: C.Hooijmans@cdl.umcn.nl.



Supplementary Figure 1. Forest plot (effect size and 95% CI) of subgroups for amyloid-β deposition.