

## Supplementary Data

---

# Fibrillar Amyloid- $\beta_{1-42}$ Modifies Actin Organization Affecting the Cofilin Phosphorylation State: A Role for Rac1/cdc42 Effector Proteins and the Slingshot Phosphatase

Ariadna Mendoza-Naranjo<sup>a</sup>, Erick Contreras-Vallejos<sup>b</sup>, Daniel R. Henriquez<sup>b</sup>, Carola Otth<sup>c</sup>, James R. Bamberg<sup>d</sup>, Ricardo B. Maccioni<sup>a</sup> and Christian Gonzalez-Billault<sup>b,\*</sup>

<sup>a</sup>Laboratory of Cellular and Molecular Neurosciences, University of Chile and International Center for Biomedicine (ICC), Santiago, Chile

<sup>b</sup>Laboratory of Cellular and Neuronal Dynamics, Department of Biology Faculty of Sciences, Universidad de Chile, Las Palmeras, Nunoa, Santiago, Chile

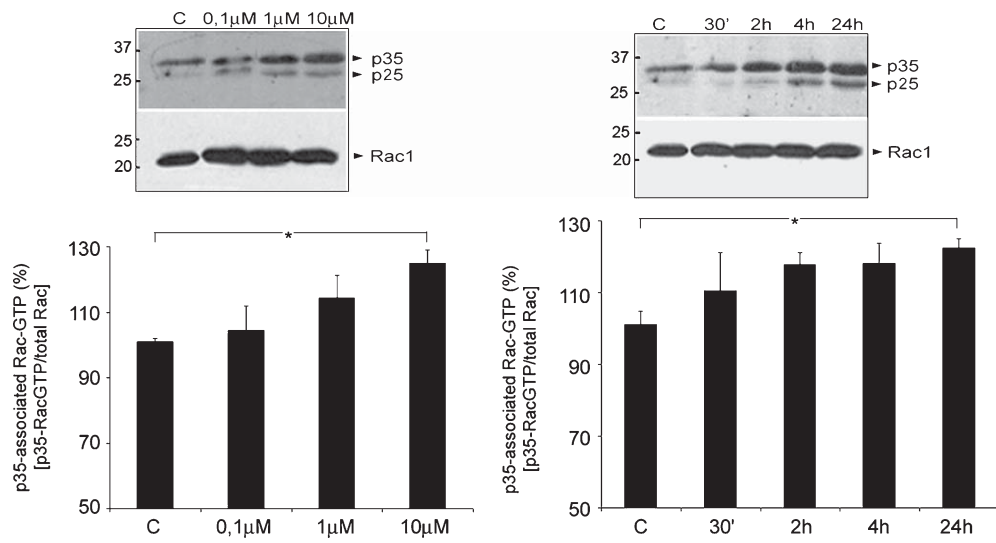
<sup>c</sup>Clinical Microbiology Institute, Faculty of Medicine, Universidad Austral de Chile, Valdivia, Chile

<sup>d</sup>Department of Biochemistry and Molecular Biology, Program in Molecular, Cellular and Integrative Neuroscience, Colorado State University, Fort Collins, CO, USA

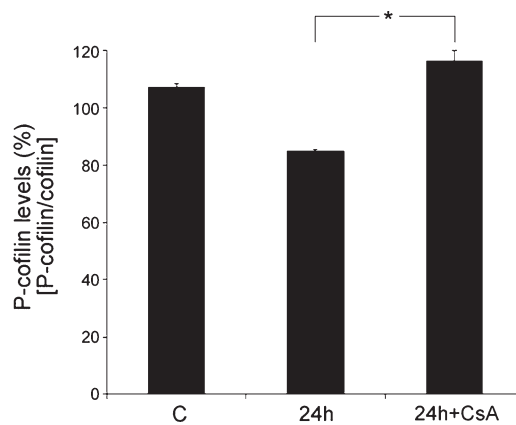
Accepted 10 November 2011

---

\*Correspondence to: Dr. Christian González-Billault, Laboratory of Cellular and Neuronal Dynamics, Department of Biology, Faculty of Sciences, Las Palmeras 3425, Nunoa, Santiago, Chile. Tel.: +56 2 9787442; Fax: +56 2 2712983; E-mail: chrgonza@uchile.cl.



Supplementary Figure 1. A $\beta$  treatment increase the association between p35 and Rac1. Hippocampal neurons were treated with 0.1, 1, and 10  $\mu$ M A $\beta$  for 24 h (left) and 10  $\mu$ M of the peptide for 30 min, 2, 4, and 24 h (right). Active Rac1 (GTP-bound) was isolated using PBD pull-down assay, and the coimmunoprecipitated p35 and p25 were evaluated by immunoblotting using anti-p35/p25 antibody. Values were normalized to total Rac1 and reported as mean  $\pm$  SEM;  $n = 3$  (\* $p < 0.05$ ).



Supplementary Figure 2. Calcineurin activity is related with phosphorylated cofilin levels. A) Changes in P-cofilin levels were analyzed in hippocampal cells stimulated with 10  $\mu$ M A $\beta$  24h in the absence or presence of 10  $\mu$ M cyclosporine A (24 h + CsA). The graphic represent mean (percentage)  $\pm$  SEM of three independent experiments,  $p \leq 0.05$ . \* $p < 0.05$ .