

Supplementary Data

Value of Diagnostic Tests to Predict Conversion to Alzheimer's Disease in Young and Old Patients with Amnestic Mild Cognitive Impairment

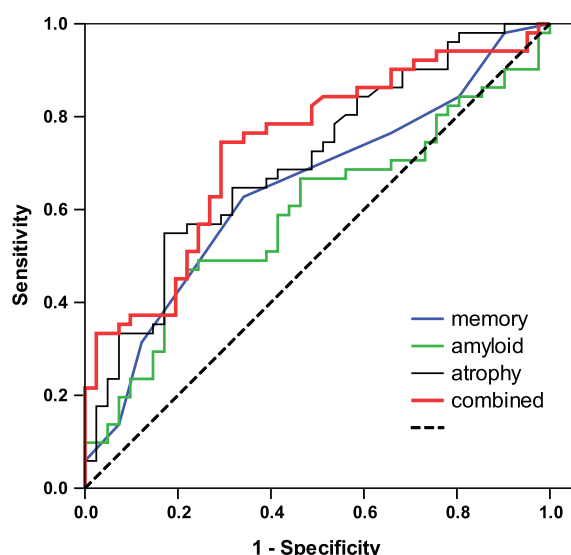
Ben Schmand^{a,b,*}, Piet Eikelenboom^{a,c} and Willem A. van Gool^a for the Alzheimer's Disease Neuroimaging Initiative¹

^aDepartment of Neurology, Academic Medical Centre, Amsterdam, The Netherlands

^bDepartment of Psychology, University of Amsterdam, Amsterdam, The Netherlands

^cDepartment of Psychiatry, Free University, Amsterdam, The Netherlands

Accepted 24 December 2011



¹Data used in the preparation of this article were obtained from the Alzheimer's Disease Neuroimaging Initiative (ADNI) database (<http://www.loni.ucla.edu/ADNI>). As such, the investigators within the ADNI contributed to the design and implementation of ADNI and/or provided data but did not participate in analysis or writing of this report. ADNI investigators include (complete listing available at <http://adni.loni.ucla.edu/research/active-investigators/>).

*Correspondence to: Ben Schmand, Academic Medical Centre, Dept of Neurology, H2, PO Box 22660, 1100 DD Amsterdam, The Netherlands. Tel.: +31 20 566 3590; Fax: +31 20 566 9217; E-mail: b.schmand@amc.nl.

Supplementary Figure 1. Receiver Operating Curves of significant predictors of conversion to Alzheimer's disease in the old age cohort (>74 years; $n=88$). The figure visualizes the middle column of Table 2. Memory: ADAS-cog delayed recall of word list. Amyloid: amyloid- β in CSF. Atrophy: inferior-temporal volume on MRI. Combined: ADAS-cog delayed recall and inferior-temporal volume combined.