

Supplementary Data

Amyloid- β Secretion, Generation, and Lysosomal Sequestration in Response to Proteasome Inhibition: Involvement of Autophagy

Lotta Agholme^{a,*}, Martin Hallbeck^b, Eirikur Benedikz^c, Jan Marcusson^a and Katarina Kågedal^d

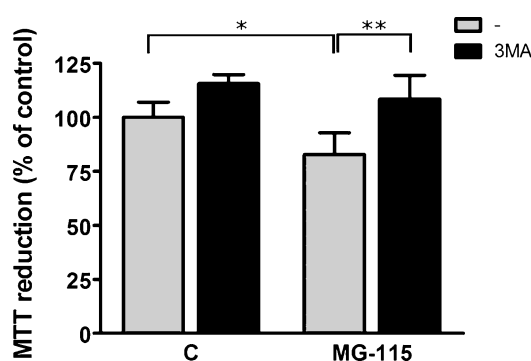
^a*Geriatric, Faculty of Health Science, Department of Clinical and Experimental Medicine, Linköping University, Linköping, Sweden*

^b*Experimental Pathology, Faculty of Health Sciences, Department of Clinical and Experimental Medicine, Linköping University, Department of Clinical Pathology, County Council of Östergötland, Linköping, Sweden*

^c*Department of Neurobiology, Division of Neurodegeneration, Care Sciences and Society, Karolinska Institute, Stockholm, Sweden*

^d*Experimental Pathology, Faculty of Health Science, Department of Clinical and Experimental Medicine, Linköping University, Linköping, Sweden*

Accepted 11 April 2012



Supplementary Figure 1. Proteasome inhibition decreases viability measured as MTT reduction capacity. MTT assay was performed on SH-SY5Y A β PP_{Swe} cells after exposure to 0.5 μ M MG-115, with or without 1 mM 3-methyl adenine (3MA). Cellular viability was decreased by proteasome inhibition, which could be prevented by co-treatment with 3MA. Bars represent mean \pm SD, $n = 5$, * $p < 0.05$, ** $p < 0.01$.

*Correspondence to: Lotta Agholme, Division of Geriatrics, IKE, Pathology building, Floor 09, Linköping University Hospital, SE-581 85 Linköping, Sweden. Tel.: +46 10 1031500; Fax: +46 10 1031529; E-mail: lotta.agholme@liu.se.