

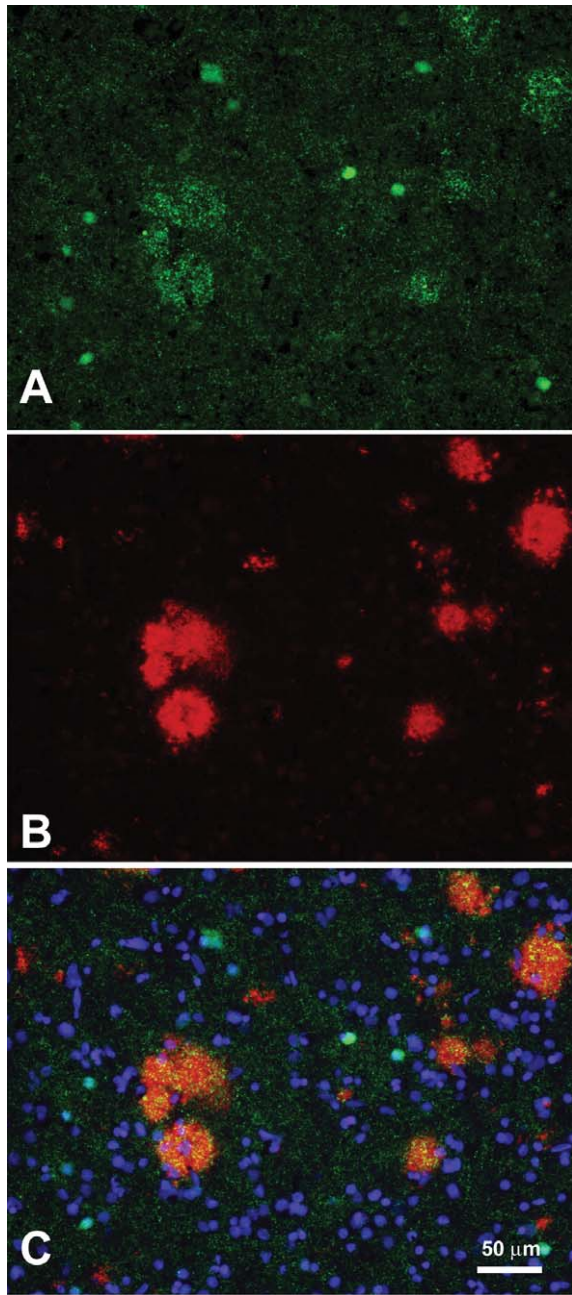
Supplementary Data

GAD65, GAD67, and GABAT Immunostaining in Human Brain and Apparent GAD65 Loss in Alzheimer's Disease

Claudia Schwab*, Sheng Yu, Winnie Wong, Edith G. McGeer and Patrick L. McGeer
Kinsmen Laboratory of Neurological Research, University of British Columbia, Vancouver, BC, Canada

Accepted 1 October 2012

*Correspondence to: Claudia Schwab, Kinsmen Laboratory of Neurological Research, Department of Psychiatry, The University of British Columbia, Vancouver, BC, Canada. Tel.: +1 604 822 7379; Fax: +1 604 822 7086; E-mail: cschwab@cmmt.ubc.ca.



Supplementary Figure 1. Double immunofluorescence staining of GAD65 (A) and amyloid- β (B) in the middle temporal gyrus of an AD case demonstrates that clusters of GAD65 granules (likely GABAergic dystrophic neurites) are associated with amyloid- β plaques (merged with Hoechst 33258 counterstaining in (C)). Additionally several interneurons are GAD65 IR (A). Calibration bar: 50 μ m.