

Supplementary Data

Genetic Influences on Atrophy Patterns in Familial Alzheimer's Disease: A Comparison of *APP* and *PSEN1* Mutations

Rachael I. Scahill^{a,*}, Gerard R. Ridgway^{a,b}, Jonathan W. Bartlett^c, Josephine Barnes^a, Natalie S. Ryan^a, Simon Mead^d, Jonathan Beck^d, Matthew J. Clarkson^{a,e}, Sebastian J. Crutch^a, Jonathan M. Schott^a, Sebastien Ourselin^{a,e}, Jason D. Warren^a, John Hardy^f, Martin N. Rossor^a and Nick C. Fox^a

^aDementia Research Centre, Department of Neurodegeneration, UCL Institute of Neurology, London, UK

^bWellcome Trust Centre for Neuroimaging, UCL Institute of Neurology, London, UK

^cDepartment of Medical Statistics, London School of Hygiene and Tropical Medicine, London, UK

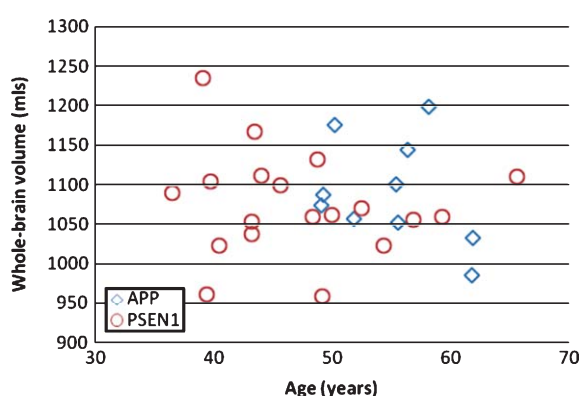
^dMRC Prion Unit and Department of Neurodegenerative Disease, UCL Institute of Neurology, London, UK

^eCentre for Medical Image Computing, University College London, London, UK

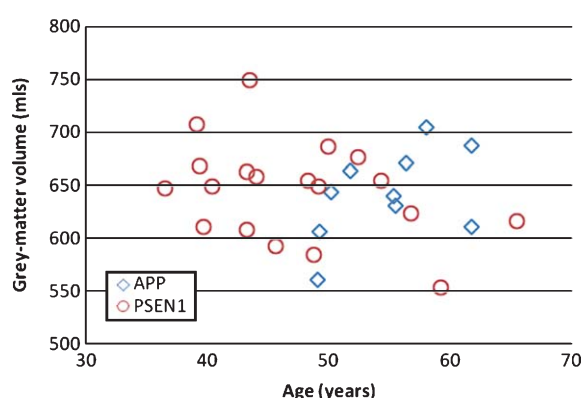
^fReta Lila Weston Institute and Department of Molecular Neuroscience, UCL Institute of Neurology, London, UK

Handling Associate Editor: J. Wesson Ashford

Accepted 14 January 2013

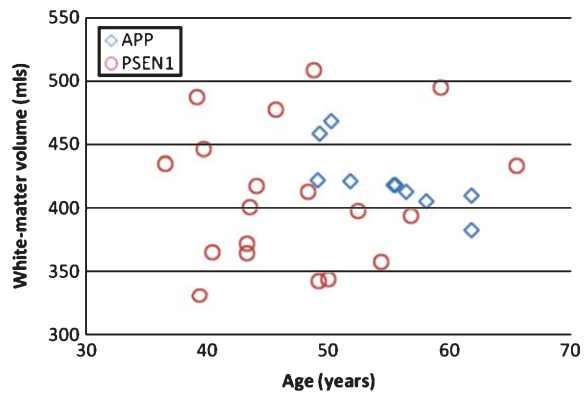


Supplementary Figure 1. Scatterplot showing whole-brain volume versus age for *APP* (blue) and *PSEN1* subjects (red).

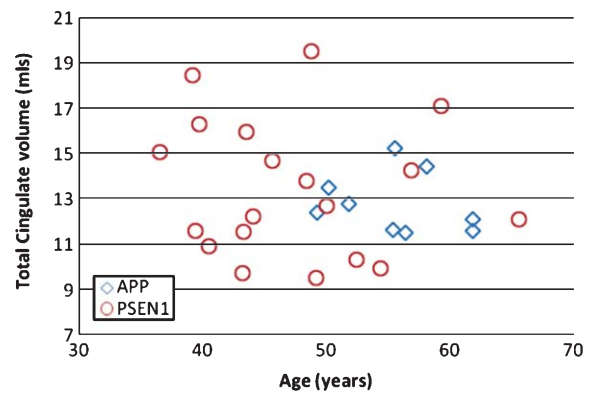


Supplementary Figure 2. Scatterplot showing grey-matter volume versus age for *APP* (blue) and *PSEN1* subjects (red).

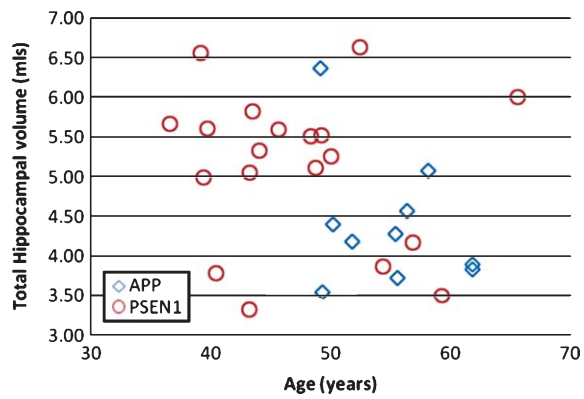
*Correspondence to: Dr. Rachael Scahill, Box 104, Department of Neurodegenerative Disease, UCL Institute of Neurology, Queen Square, London, WC1N 3BG, UK. Tel.: +44 207 242 0038; E-mail: r.scahill@ucl.ac.uk.



Supplementary Figure 3. Scatterplot showing white-matter volume versus age for *APP* (blue) and *PSEN1* subjects (red).



Supplementary Figure 5. Scatterplot showing total cingulate volume versus age for *APP* (blue) and *PSEN1* subjects (red).



Supplementary Figure 4. Scatterplot showing total hippocampal volume versus age for *APP* (blue) and *PSEN1* subjects (red).